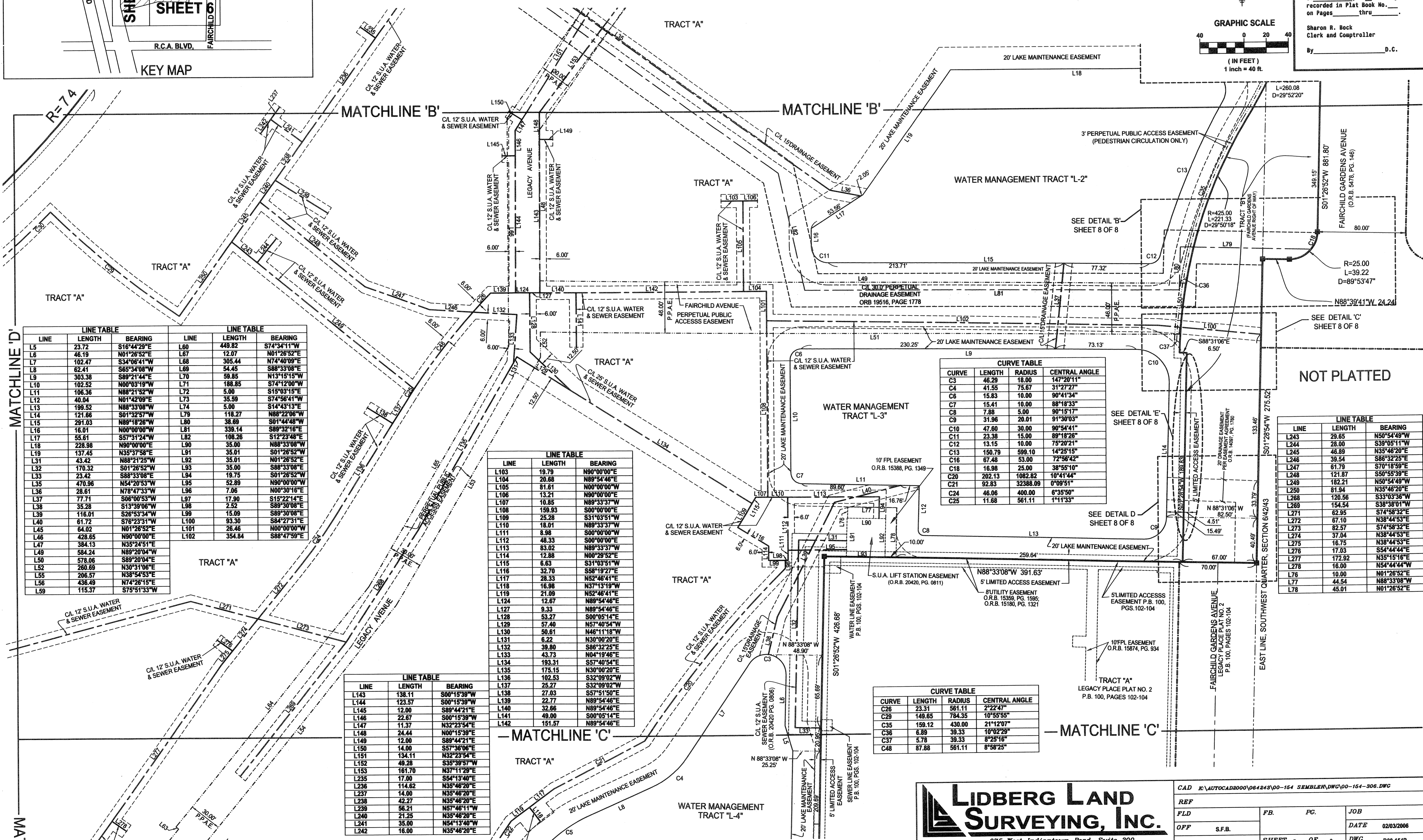
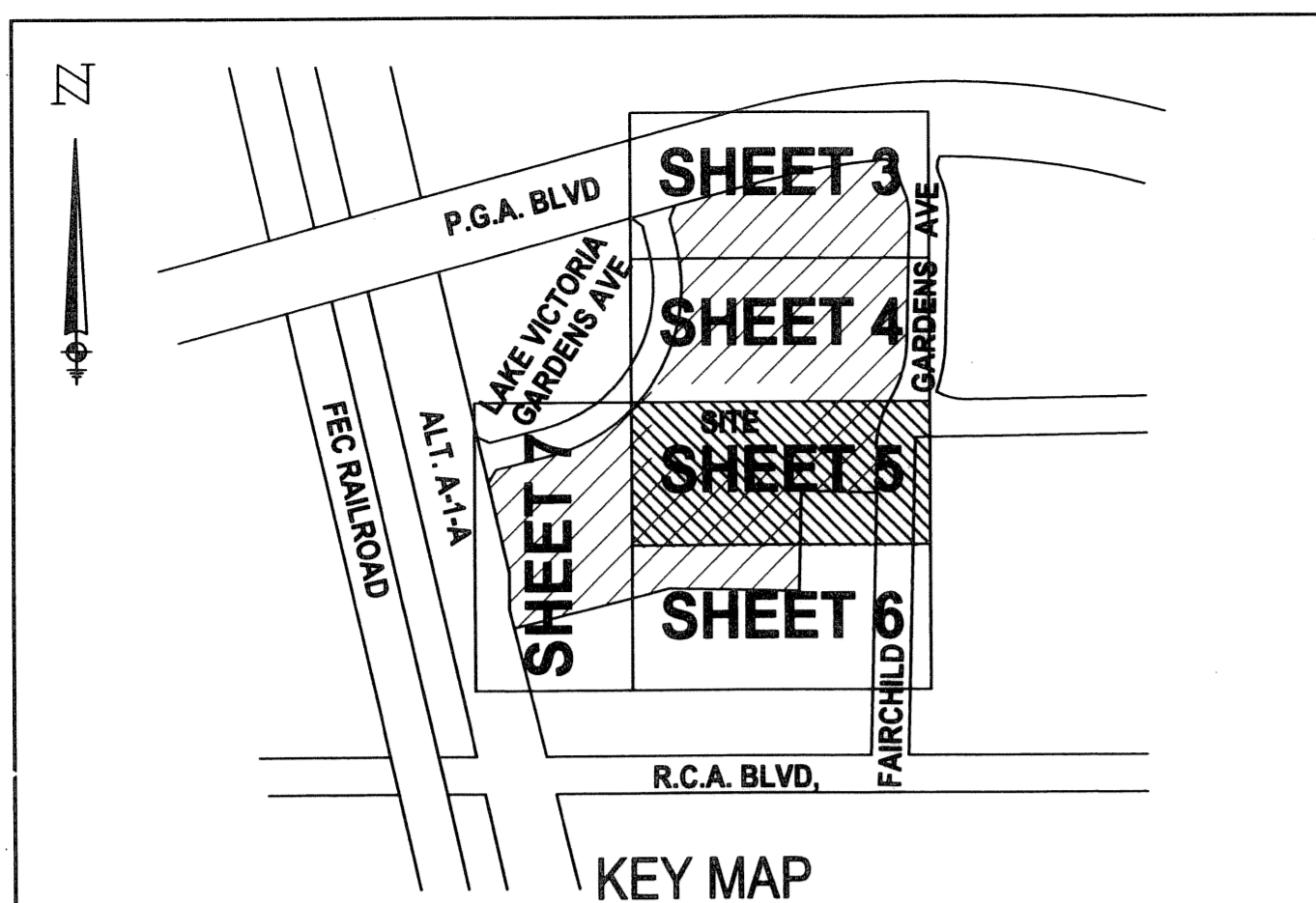
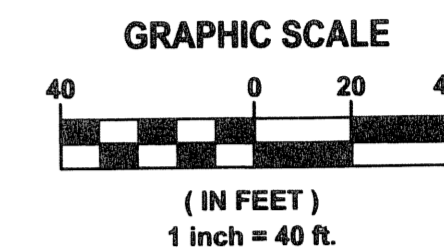


# LEGACY PLACE COMMERCIAL

BEING A REPLAT OF A PORTION OF PARCEL 1, LEGACY PLACE, AS RECORDED IN  
 PLAT BOOK 90, PAGES 119 THROUGH 121, PUBLIC RECORDS OF PALM BEACH COUNTY, FLORIDA  
 LYING IN SECTION 6, TOWNSHIP 42 SOUTH, RANGE 43 EAST  
 CITY OF PALM BEACH GARDENS, PALM BEACH COUNTY, FLORIDA  
 SHEET 5 OF 8 JULY, 2006

33

STATE OF FLORIDA  
 COUNTY OF PALM BEACH  
 This plat was filed for  
 record at \_\_\_\_\_ M. this day  
 of \_\_\_\_\_ 2006 and duly  
 recorded in Plat Book No. \_\_\_\_\_  
 on Pages \_\_\_\_\_ thru \_\_\_\_\_  
 Sharon R. Bock  
 Clerk and Comptroller  
 By \_\_\_\_\_ D.C.



LINE TABLE			LINE TABLE		
LINE	LENGTH	BEARING	LINE	LENGTH	BEARING
L5	23.72	S16°44'29"E	L60	448.82	S74°34'11"W
L6	46.19	N01°26'52"E	L67	12.07	N01°26'52"E
L7	102.47	S34°08'41"W	L68	308.44	N74°40'09"E
L8	62.41	S65°34'08"W	L69	54.45	S88°33'08"E
L9	303.38	S89°21'44"E	L70	59.85	N13°15'15"W
L10	102.52	N00°03'19"W	L71	188.85	S74°12'00"W
L11	106.36	N88°18'25"W	L72	5.00	S15°03'15"E
L12	40.04	N01°42'08"E	L73	35.59	S74°56'41"W
L13	199.52	N88°33'08"W	L74	5.00	S14°43'13"E
L14	121.66	S01°32'57"W	L79	118.27	N88°22'06"W
L15	291.03	N89°18'28"W	L80	38.69	S01°44'48"W
L16	16.01	N00°00'00"W	L81	339.14	S89°32'16"E
L17	55.61	S57°31'24"W	L82	108.26	S12°23'48"E
L18	228.96	N90°00'00"E	L90	35.60	N88°33'08"W
L19	137.45	N35°17'58"E	L91	35.01	S01°26'52"W
L20	43.42	N88°21'25"W	L92	35.01	N01°26'52"E
L21	170.32	S01°26'52"W	L93	35.00	S88°33'08"E
L22	23.42	S88°33'08"E	L94	19.75	S01°26'52"W
L23	470.96	N54°20'53"W	L95	52.89	N90°00'00"W
L24	28.61	N78°47'33"W	L96	7.06	N00°30'16"E
L25	77.71	S06°00'53"W	L97	17.90	S15°22'14"E
L26	35.28	S13°39'06"W	L98	2.52	S89°30'08"E
L27	116.01	S26°53'34"W	L99	15.09	S89°30'08"E
L28	61.72	S76°23'31"W	L100	93.30	S84°27'31"E
L29	64.02	N01°26'52"E	L101	26.46	N00°00'00"W
L30	428.65	N90°00'00"E	L102	354.84	S88°47'59"E
L31	384.13	N35°24'51"E			
L32	584.24	S89°20'04"E			
L33	260.69	N30°11'06"E			
L34	206.57	N38°54'53"E			
L35	436.49	N74°28'15"E			
L36	115.37	S75°51'33"W			

LINE TABLE		
LINE	LENGTH	BEARING
L103	19.79	N90°00'00"E
L104	20.68	N89°54'46"E
L105	81.61	N00°00'00"W
L106	13.21	N90°00'00"E
L107	10.86	N89°53'37"W
L108	158.93	S00°00'00"E
L109	25.28	S31°03'51"W
L110	18.01	N89°33'37"W
L111	8.98	S00°00'00"W
L112	48.33	S00°00'00"E
L113	83.02	N89°33'37"W
L114	12.88	N00°29'52"E
L115	6.83	S31°03'51"W
L116	32.70	S88°19'27"E
L117	28.33	N52°46'41"E
L118	16.98	N37°15'19"W
L119	21.09	N52°46'41"E
L120	12.67	N88°54'46"E
L121	9.33	N89°54'46"E
L122	53.27	S00°05'14"E
L123	57.40	N57°40'54"W
L124	50.61	N46°11'18"W
L125	6.22	N30°00'20"E
L126	39.80	S86°32'25"E
L127	43.73	N04°19'46"E
L128	193.31	S57°40'54"E
L129	175.15	N30°00'20"E
L130	102.53	S32°09'02"W
L131	25.27	S32°09'02"W
L132	27.03	S57°51'50"E
L133	22.77	N52°46'41"E
L134	32.66	N89°54'46"E
L135	49.00	S00°05'14"E
L136	151.57	N89°54'46"E

LINE TABLE		
LINE	LENGTH	BEARING
L143	138.11	S00°15'39"W
L144	123.57	S00°15'39"W
L145	12.00	S89°44'21"E
L146	22.67	S00°15'39"W
L147	11.37	N32°23'54"E
L148	24.44	N00°15'39"E
L149	12.00	S89°44'21"E
L150	14.00	S57°36'06"E
L151	134.11	N32°23'54"E
L152	49.28	S35°39'57"W
L153	161.70	N37°11'29"E
L235	17.00	S54°13'40"E
L236	114.62	N35°46'20"E
L237	14.00	N35°46'20"E
L238	42.27	N35°46'20"E
L239	56.21	N57°48'11"W
L240	21.25	N35°46'20"E
L241	35.00	N54°13'40"W
L242	16.00	N35°46'20"E

CURVE TABLE			
CURVE	LENGTH	RADIUS	CENTRAL ANGLE
C3	46.29	18.00	147°20'11"
C4	41.55	75.67	31°27'27"
C6	15.83	10.00	90°41'34"
C7	15.41	10.00	88°18'33"
C8	31.96	20.01	91°30'03"
C9	47.80	30.00	90°54'41"
C11	23.38	15.00	89°18'26"
C12	13.15	10.00	75°20'21"
C13	150.79	598.10	14°25'15"
C16	67.48	53.00	72°56'42"
C19	16.98	25.00	38°55'10"
C20	202.13	1082.82	10°41'44"
C21	92.83	32388.09	0°09'51"
C24	46.06	400.00	6°35'50"
C25	11.68	561.11	1°11'33"

LINE TABLE		
LINE	LENGTH	BEARING
L243	28.65	N50°54'49"W
L244	28.00	S39°05'11"W
L245	46.89	N35°46'20"E
L246	39.54	S86°32'25"E
L247	61.79	S70°55'39"E
L248	121.87	S50°55'39"E
L249	182.21	N30°54'49"W
L250	81.94	N35°46'20"E
L268	120.56	S33°03'36"W
L269	154.54	S38°38'01"W
L271	62.95	S74°58'32"E
L272	67.10	N38°44'53"E
L273	82.57	S74°58'32"E
L274	37.04	N38°44'53"E
L275	16.75	N38°44'53"E
L276	17.03	S54°44'44"E
L277	172.92	N35°15'16"E
L278	16.00	N54°44'44"W
L76	10.00	N01°26'52"E
L77	44.54	N88°33'08"W
L78	45.01	N01°26'52"E

CAD K:\AUTOCAD2000\0624243\00-154 SEMBLER\DWG\00-154-306.DWG			
REF			
FLD	FB.	PC.	JOB
OFF	S.F.B.		DATE 02/03/2006
CKD	D.C.L.	SHEET 5 OF 8	DWC D00-154P